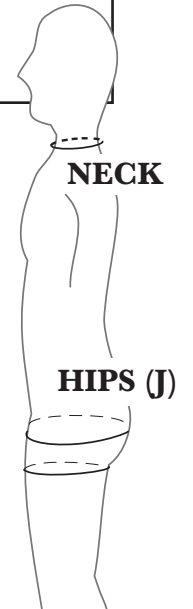
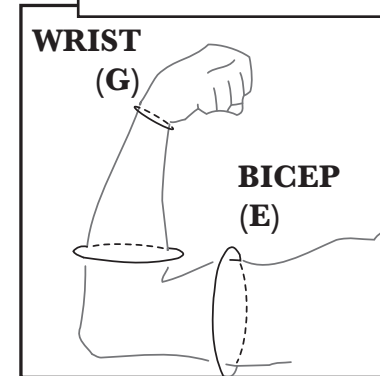
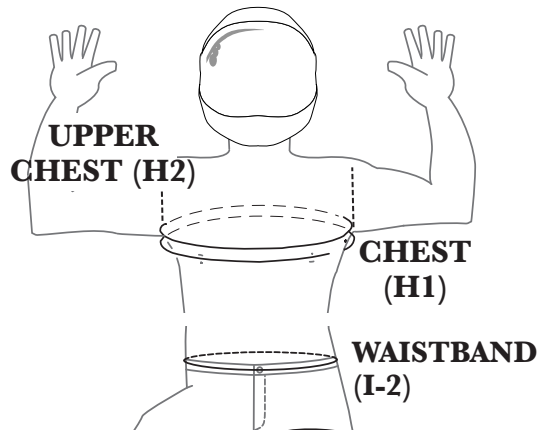
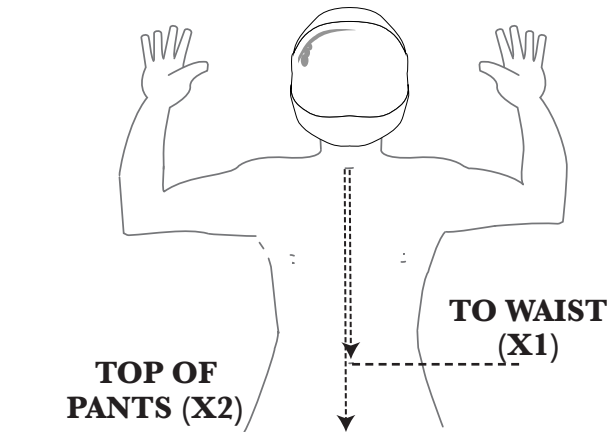
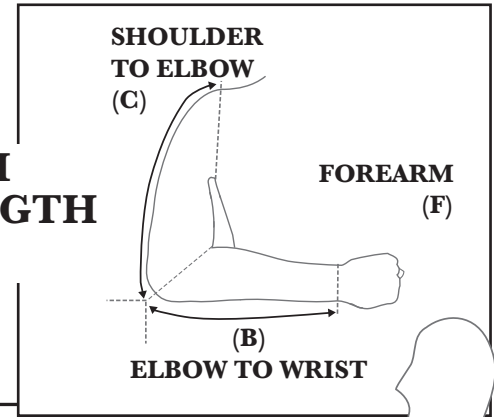
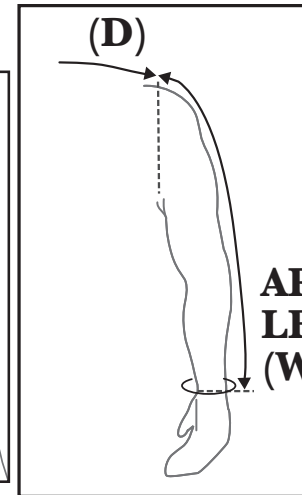
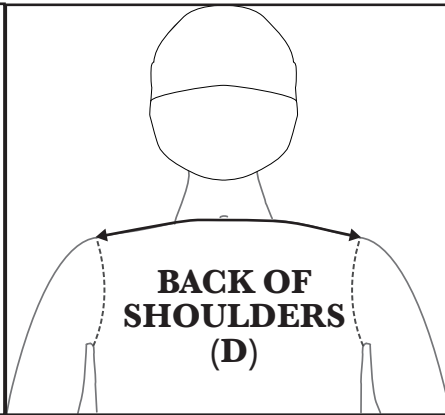
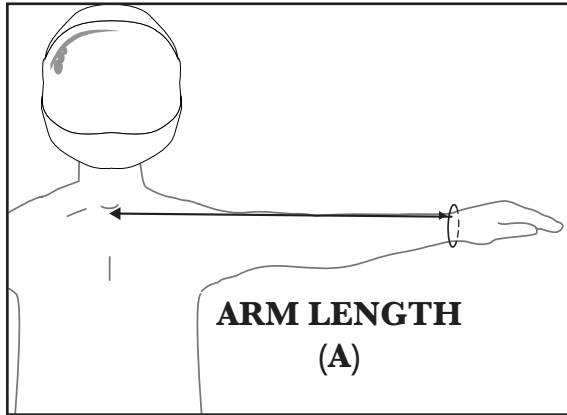


MEASURING FORM



GENDER HEIGHT WEIGHT US SHOE SIZE

--	--	--	--

ARM LENGTH	SHOULDER	ARM LENGTH	SHOULDER TO ELBOW	ELBOW TO WRIST	WRIST	FOREARM	BICEP
A	D	WA	C	B	G	F	E
	H2	H1	I2	J		X1	X2

NECK UPPER CHEST CHEST WAISTBAND HIPS WOMENS CUP SIZE TO WAIST TOP OF PANTS

Name _____ Contact Email _____ **Enter the measurements into the online designer**
 Dealer _____ Contact Phone _____ www.tonysuits.com/products/design-a-suit

MEASURING GUIDE

JACKET MEASURING VIDEO:

<http://bit.do/measure4>

(A) ARM

Measure from the center of the hole at the base of the throat to the bend in the wrist just below the wristbone.

(D) SHOULDER TIP TO SHOULDER TIP

The best reference for this is between the two prominent bones at the shoulder edges. Imagine a line straight up from your armpits to your shoulders and measure between them.

(WA) ARM LENGTH

From the shoulder tip - at the end point of measurement D - to the bend in the wrist just below the wristbone.

(C) SHOULDER TO ELBOW

Mark the end point on the (D) measurement with your finger, reset the tape and measure down to the center of the elbow with the arm bent in a 90 degree position.

(B) ELBOW TO WRIST

Mark the end point on the (C) measurement with your finger, reset the tape and measure down to the wrist where the wrist bends just past the wristbone (not onto the hand).

(E) BICEPS

Flex the right bicep, if right handed. Hold flexed and measure at the widest point.

(F) FOREARMS

Flex the forearm and measure at the widest point. The Flex is what you'll be doing when skydiving and taking grips or having grips taken on you, so we want that flexed area in your suit arms.

(H2) UPPER CHEST

Measure at the top of the chest, top of the breast for women, across the chest at armpit level for men. Remember to keep the tape level

(H1) CHEST

With both arms up, place the tape around the chest at nipple level, do not curve the tape; keep it level all around. Put arms down to get an accurate chest measurement. (Put on weight vest if used). RELAX, do not over inflate your chest.

(I-2) WAISTBAND

Measure around the waistband area, holding the tape measure to simulate wearing a belt.

(J) HIP (AT WIDEST POINT)

Remove everything from your pockets. MEASURE AT THE WIDEST POINT. This is generally about 7 inches below the waistline at the belly button.

TONYSUITS
RW & FF JACKETS



(X1) TO WAIST

From the hole at the throat, measure down to the waist.

(X2) TOP OF PANTS

From the hole at the throat (1), measure down to the waist.